

NOTES

1. ROUGH UP CONCRETE ON EXISTING BOARD SEAT PRIOR TO POURING.
2. DRILL HOLES PER MANUFACTURERS SPECIFICATIONS TO A DEPTH OF 5" MINIMUM, OR APPROVED EQUIVALENT. BARS ARE TO BE #4 REBAR CENTERED IN WALL WITH 12" SPACING HORIZONTALLY AND VERTICALLY. HOLES MUST BE CLEANED WITH OIL-FREE COMPRESSED AIR AND A NYLON BRUSH PRIOR TO APPLICATION OF EPOXY.
3. RWCD INSPECTOR SHALL BE PRESENT PRIOR TO EPOXY APPLICATION TO INSPECT AND APPROVE CLEANLINESS OF HOLES.
4. EPOXY SHALL BE SIMPSON STRONG-TIE ET EPOXY-TIE ADHESIVE, OR APPROVED EQUIVALENT. EPOXY MUST BE PREPARED AND INSTALLED PER MANUFACTURERS SPECIFICATIONS.
5. REBAR MUST BE INSERTED INTO HOLE AFTER EPOXY APPLICATION PER SIMPSON STRONG-TIE ET EPOXY-TIE ADHESIVE SPECIFICATIONS, OR APPROVED EQUIVALENT.
6. ALL CONCRETE FOR USE IN WORK SHALL CONFORM TO THE REQUIREMENTS OF SECTION 505 AND 725 OF THE UNIFORM STANDARD SPECIFICATIONS FOR PUBLIC WORKS CONSTRUCTION, MARICOPA ASSOCIATION OF GOVERNMENTS, ARIZONA, LATEST EDITION, ACI AND ASTM CODES.
7. ALL REINFORCEMENT SHALL CONFORM TO THE REQUIREMENT OF SECTION 727 OF THE UNIFORM STANDARD SPECIFICATIONS FOR PUBLIC WORKS CONSTRUCTION, MARICOPA ASSOCIATION OF GOVERNMENTS, ARIZONA, LATEST EDITION, ACI AND ASTM CODES.
8. ALL CONCRETE SHALL HAVE COMPRESSIVE STRENGTH OF 4,000 PSI AT 28 DAYS.
9. TOP OF BOARD SEAT ENCLOSURE SHALL BE 3" BELOW EXISTING TOP OF STRUCTURE. ALL VERTICAL REBAR SHALL BE INSTALLED 5" BELOW TOP OF STRUCTURE.

LAST UPDATED: 03/06/06

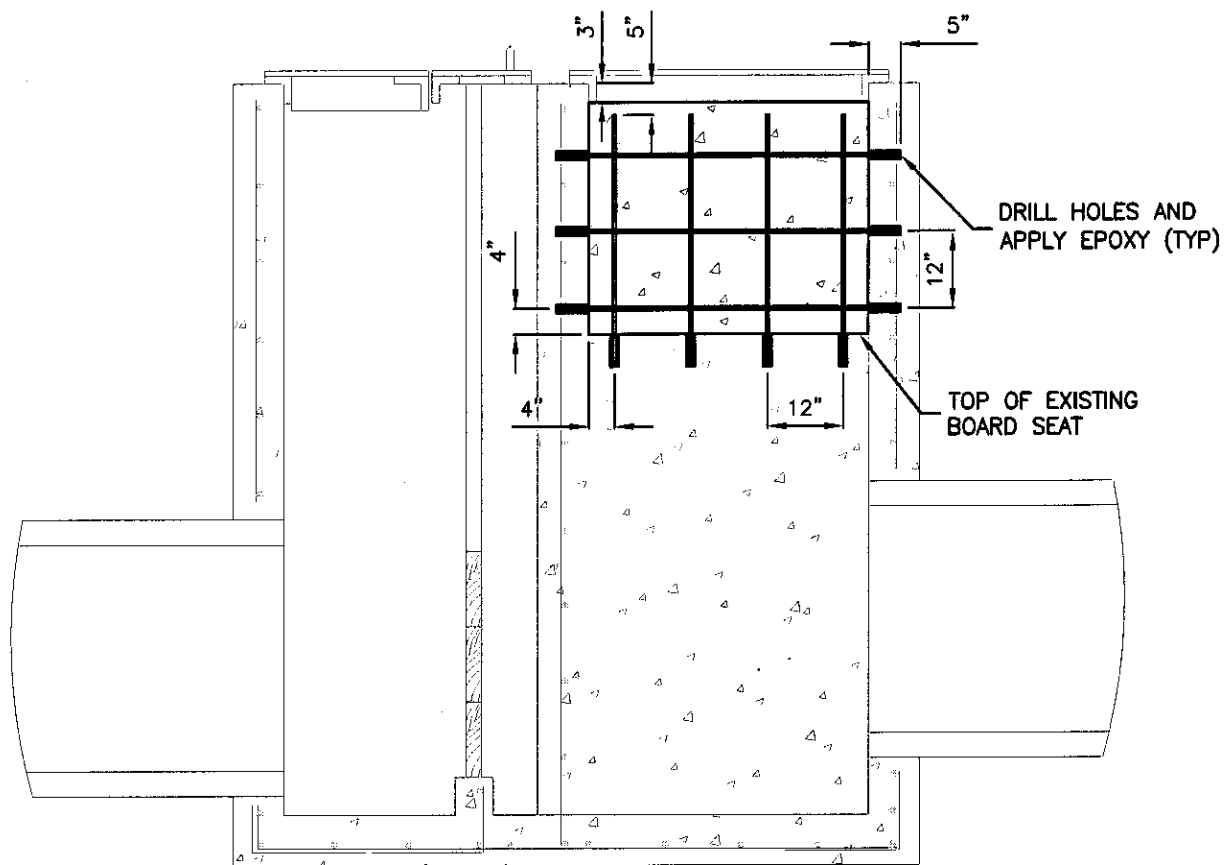
ROOSEVELT WATER CONSERVATION DISTRICT

BOARD SEAT ENCLOSURE

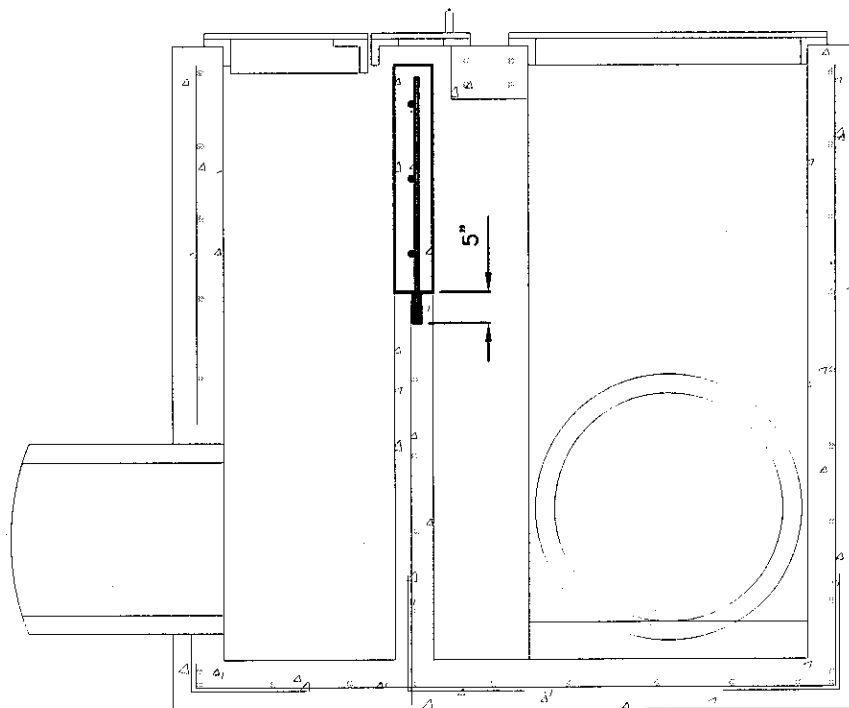
SHEET 1 OF 2

MINIMUM REQUIRMENTS AND NOTES

RWCD-39



FRONT VIEW



SIDE VIEW

LAST UPDATED: 03/06/06

ROOSEVELT WATER CONSERVATION DISTRICT

BOARD SEAT ENCLOSURE