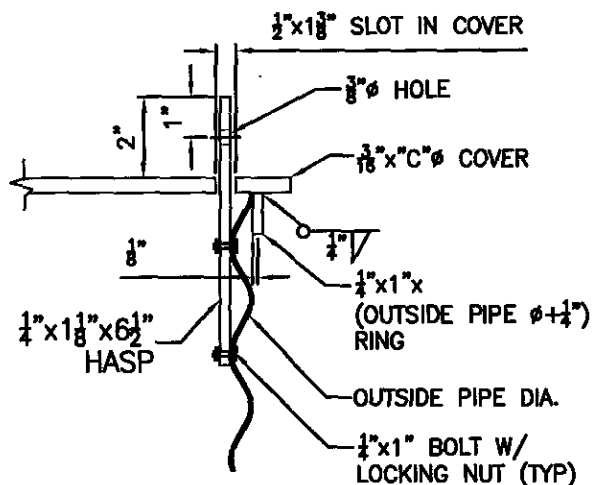
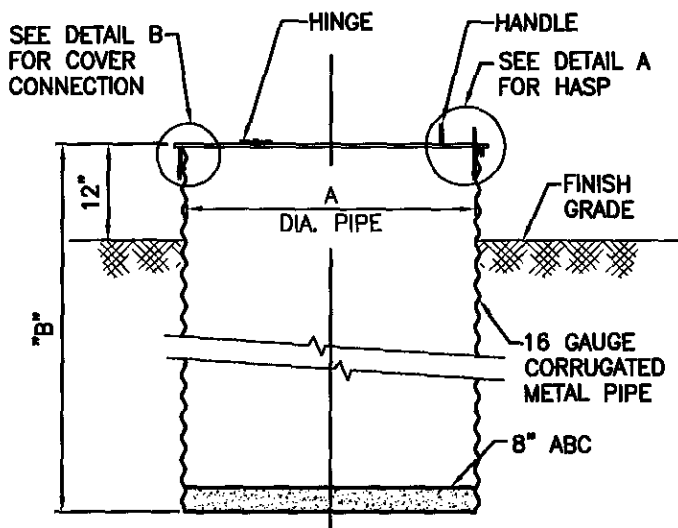


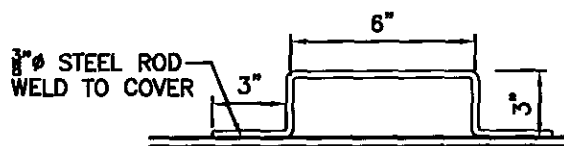
PLAN VIEW



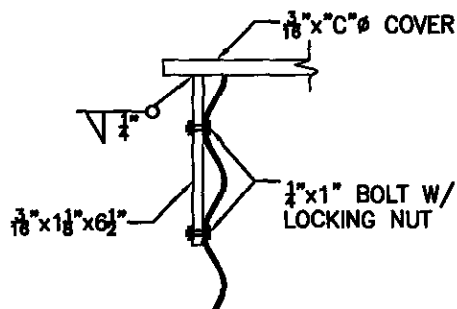
DETAIL A



SECTION



HANDLE



DETAIL B

NOTES

1. ALL WELDED CONNECTIONS SHALL RUN THE ENTIRE LENGTH OF THE CONNECTION AND MUST BE IN ACCORDANCE WITH AWS AND AISC CODES.
2. ALL METAL SURFACES AND WELDED CONNECTIONS MUST BE PAINTED WITH A SHOP PRIME COAT. THE SECOND AND FINISH COATS SHALL BE DONE IN ACCORDANCE WITH THE MAG SPECIFICATIONS 530 AND 790. FINISH COAT SHALL BE NO. 10 ALUMINUM.

VAULT SIZE	STOPLOG SIZE	BOARD SEAT LENGTH	A	B	C	D
1	46 1/2"	44"	24"	60 1/2"	27"	8"
2	62 1/2"	60"	36"	77"	39"	13"
3	87 1/2"	84"	36"	101 1/2"	39"	13"

LAST UPDATED: 08/29/06

ROOSEVELT WATER CONSERVATION DISTRICT

STOPLOG STORAGE VAULT