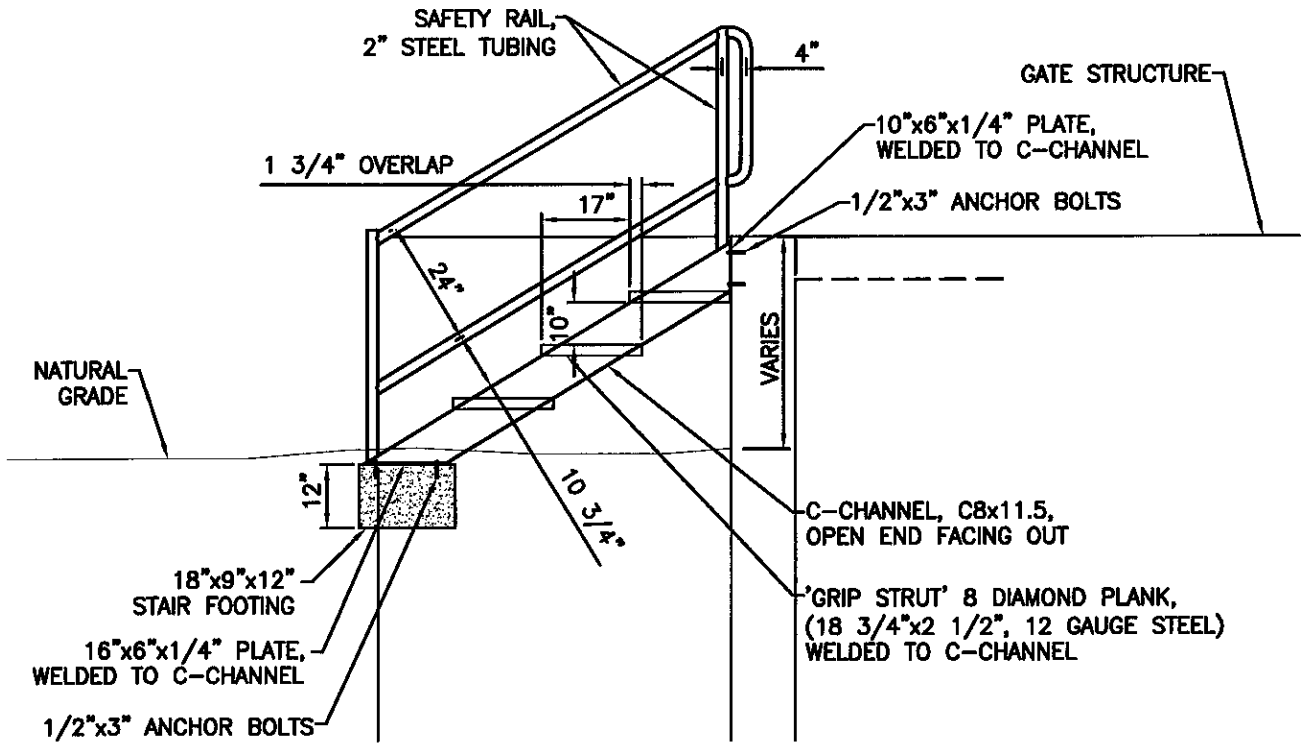


PLAN VIEW

NTS



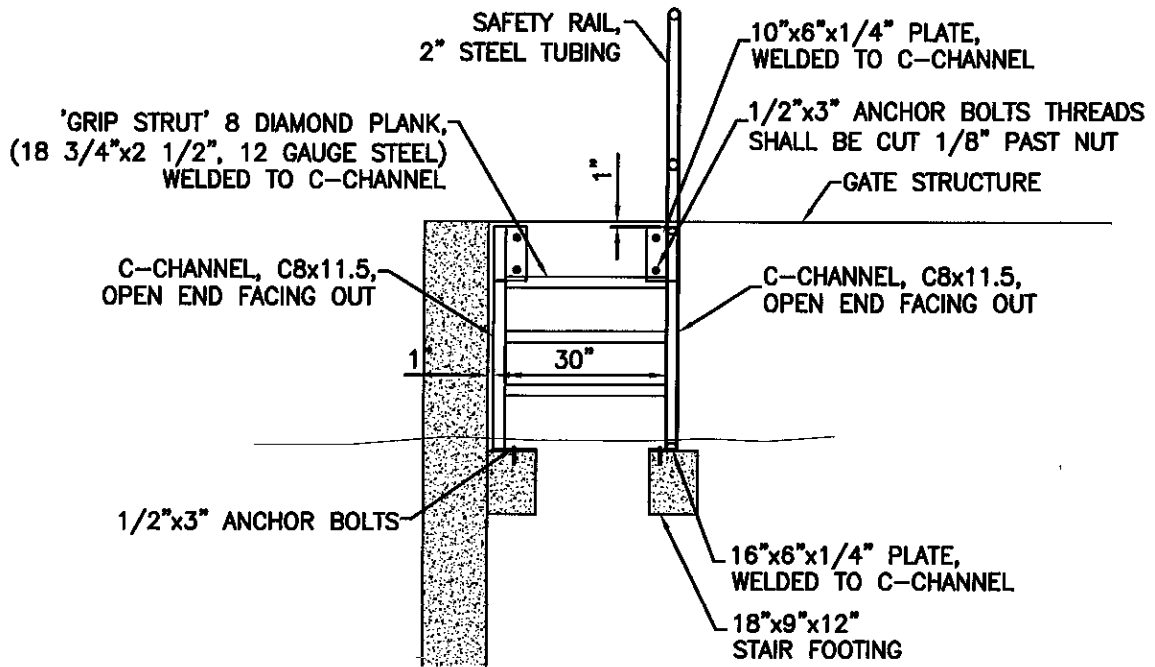
SIDE VIEW

NTS

LAST UPDATED: 03/06/06

ROOSEVELT WATER CONSERVATION DISTRICT

METAL STRUCTURE STAIRS



FRONT VIEW

NTS

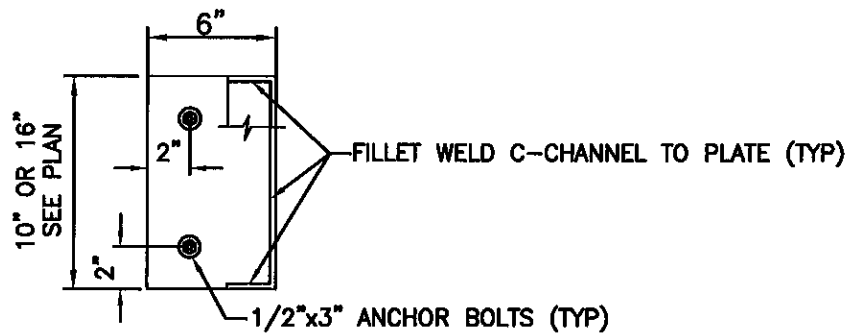


PLATE DETAIL

NTS

NOTES:

1. ALL WELDED CONNECTIONS SHALL BE 3/8" FILLET WELDS ALONG THE ENTIRE LENGTH OF CONNECTION AND MUST BE IN ACCORDANCE WITH AWS AND AISC CODES.
2. ALL METAL SURFACES AND WELDED CONNECTIONS SHALL BE PAINTED WITH ONE COAT ZINC CHROMATE OR RED LEAD PRIMER (INDUSTRIAL QUALITY). THE SECOND COAT SHALL BE NO. 10 ALUMINUM PER MAG SPEC 790.
3. ANCHOR PLATE TO STAIR WITH 2 EA. 1/2" DIA REDHEAD BOLTS EPOXIED 3" INTO CONCRETE.
4. STAIR FOOTING TO BE MIN 2500 PSI CONCRETE.
5. ANCHOR BOLTS SHALL BE CUT TO A MAX HEIGHT OF 1/8" ABOVE THE NUT.

LAST UPDATED: 03/06/06

Roosevelt Water Conservation District

METAL STRUCTURE STAIRS